

Lillypad

Lillypad is a newsletter of Lotus Place NQ.
Lotus Place is a dedicated support service and resource centre for adults who experienced childhood abuse in an institutional setting.



www.lotusplace.org.au | North Queensland | FEBRUARY 2021

In this issue | Welcome | Upcoming Events | NRL Footy Tipping | Arts Project | Creative Space

WELCOME

Hi Folks and Welcome to the second Lillypad for 2021. WOW we are almost into the third month of the new year, easter is just around the corner.

We have the camps included in our calendar for this year. We will host camps in the 3 regions of Townsville, Burdekin, Charters Towers, and Ingham. Cairns, Tablelands and Herberton & the Mackay, Sarina and Whitsundays.

Due to an increase in participants accessing Lotus Place Support Services, we are also extending the outreach visits to the Tablelands from Cairns and out to Charters Towers from Townsville. We will alternate the peer groups between Cairns and the Tablelands and have organised a bus from the Atherton to provide return transport to Cairns from the Tablelands district.

We look forward to catching up with you all, visiting the regions and attending camps, art workshops and other events throughout the year and hope you can join me for a cuppa and chat, with a bit of adventure and fun along the way. Please call or drop in anytime, you're most welcome. Thank you – Jacqui

Upcoming Events: March 2021

Sunday	Monday	Tuesday	Wednesday	Thursday	Friday	Saturday
	1	2 Townsville Peer Group 11am 382 Sturt St, Townsville City	3 Burdekin Peer Group 11am Burdekin Library – 108 Graham St	4	5 Townsville Community Day	6
7	8	9 Townsville Peer Group 11am 382 Sturt St, Townsville City	10 Mackay Peer Group 11am Jubilee Community Centre	11	12	13
14	15	16 Townsville Peer Group 11am 382 Sturt St, Townsville City	17 Far North QLD Peer Group (Cairns) 11am	18	19	20
21	22	23 Townsville Peer Group 11am 382 Sturt St, Townsville City	24	25	26	27
28	29	30 Townsville Peer Group 11am 382 Sturt St, Townsville City	31			

The National Redress Scheme

Micah Projects' Redress Team is continuing to assist people to submit applications to the National Redress Scheme (NRS). The NRS provides support to people who experienced child sexual abuse in institutions including, but not limited to, foster care, children's homes, youth detention centres, sporting clubs, schools, and religious institutions. To know more about the NRS and your eligibility, or to discuss if the NRS is the right option for you, please phone **3036 4490** 9am to 5pm Monday to Friday or email redress@micahprojects.org.au

Australia Honours Abuse Survivor Who Fought To Speak Out

The awarding of Grace Tame the recognition and responsibility of Australian of the Year is likely to come as a shock to many as she was up against well-known faces who lead the response to well-publicised national crises.

Her honour not only elevates the continued issue of child sexual abuse but, more importantly, her passionate acceptance speech declared **"survivors be proud, our voices are changing history"** and, in the face of being silenced by her perpetrator and shamed when she reported the repeated abuse, "when we share we heal ... lived experience informs structural and social change ... we can redefine what it means to be a survivor ... the cultures that enables child sexual abuse still exist". Let's be inspired by Grace. We'll keep this conversation going in the next Lilypad.

NRL Footy Tipping Competition 2021

The NRL season is now fast approaching and we have received some interest into the footy tipping this year. It is free to enter and there are prizes for the winner at the end of the season.

The season kicks off on Thursday 11th March... so call Misty or Holly on 4722 8100 if you are interested in playing along!!

PS. GO COWBOYS!!!!

New Arts Project for Lotus Place in 2021

Reconciling Histories:

Recollecting, Reconnecting, and Reclaiming the journey.

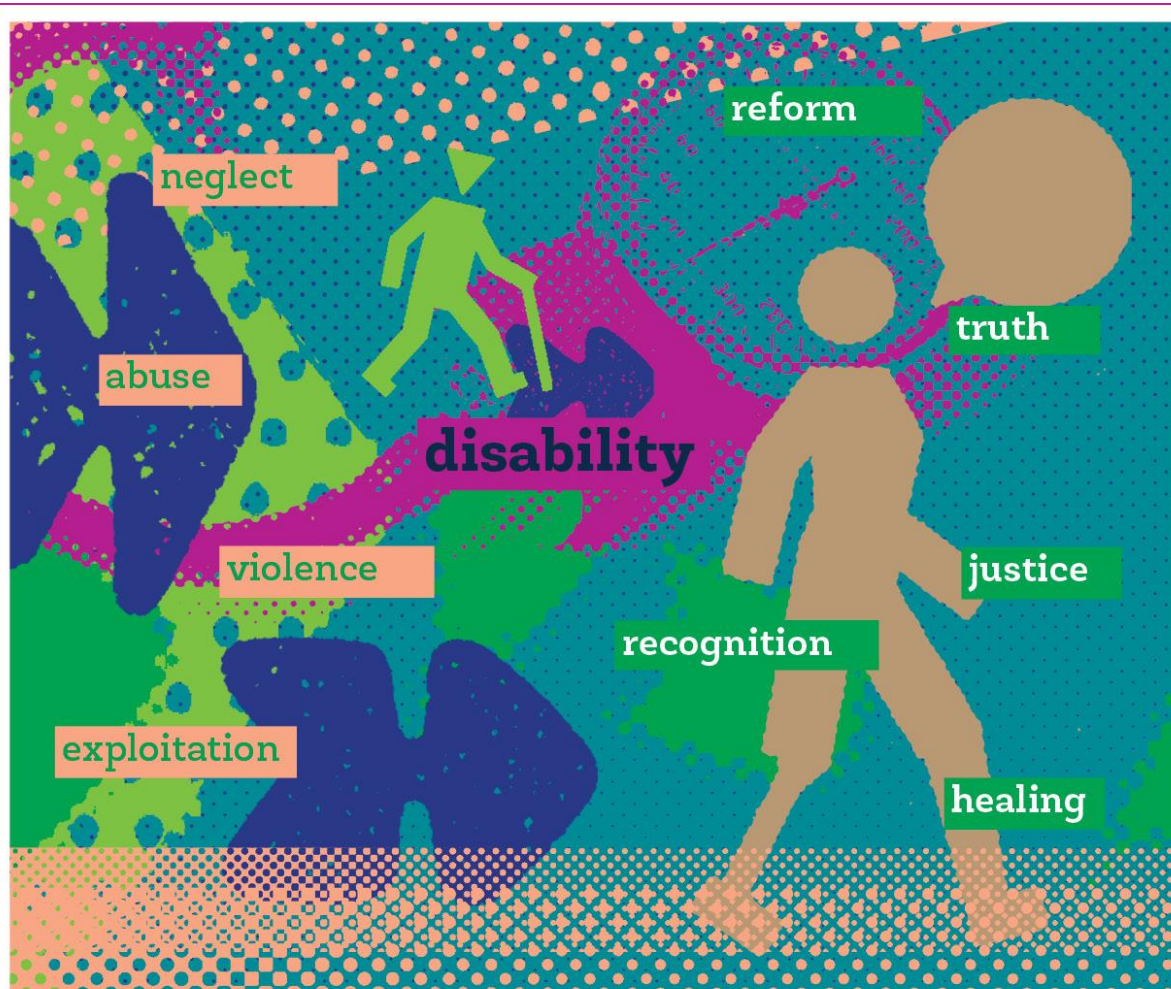
This is a visual art project is designed to build skills, inspire imagination and support creative expression for Lotus Place participants.

Workshops will be on between April and August 2021, finishing with a public exhibition in September 2021, during Child Protection Week. It is happening in Brisbane, Townsville, and Rockhampton.

Professional artists will work alongside participants in a supportive environment where all involved will be encouraged to build skills, express themselves and develop a greater understanding of their own creative ability.

Through this project we hope to increase awareness in the community and generate a broader conversation about this part of Australia's dark history.

If you would like to be involved or would like more information, please contact Lotus Place in your region. Or email lotus.arts@micahprojects.org.au



Lotus Support Services–Micah Projects

A free, independent and confidential counselling and support service, available Queensland wide.

Supporting people engaged with the Disability Royal Commission.

07 3036 4490

lotussupportservices@micahprojects.org.au
micahprojects.org.au

Funded by Australian Government Department of Social Services

AN ACTIVITY OF  MICAH PROJECTS

What do YOU want to see in YOUR newsletter?

We want to hear from YOU. This newsletter is your voice. Is there something you want to share?

Send in your photographs, paintings, any newspaper articles you may have come across; a poem you wrote or a thought you had, and we will put it in the next newsletter.

If you have something, you'd like to share with the Lotus Place community, please contact us on (07) 4722 8100 or lotusnq@micahprojects.org.au



The lotus flower has its origins and roots in the muddy waters below the surface, yet above the water it is a beautiful resilient flower.

After a consultative process, the Lotus Flower was chosen as both a metaphor and image to represent the journey from adversity to hope.

Lotus Place NQ

382 Sturt Street, Townsville Q 4810
PO Box 2027, Townsville Q 4810
Phone [07 4722 8100](tel:0747228100) or [1800 16 11 09](tel:1800161109) | Fax [07 4772 0011](tel:0747720011)
lotusnq@micahprojects.org.au | www.lotusplace.org.au

Open hours – Tuesday Wednesday Thursday Friday 9am – 3pm; Monday 11:30am – 3pm
Call anytime for support and referral over the phone

Lotus Place is an activity of Micah Projects

